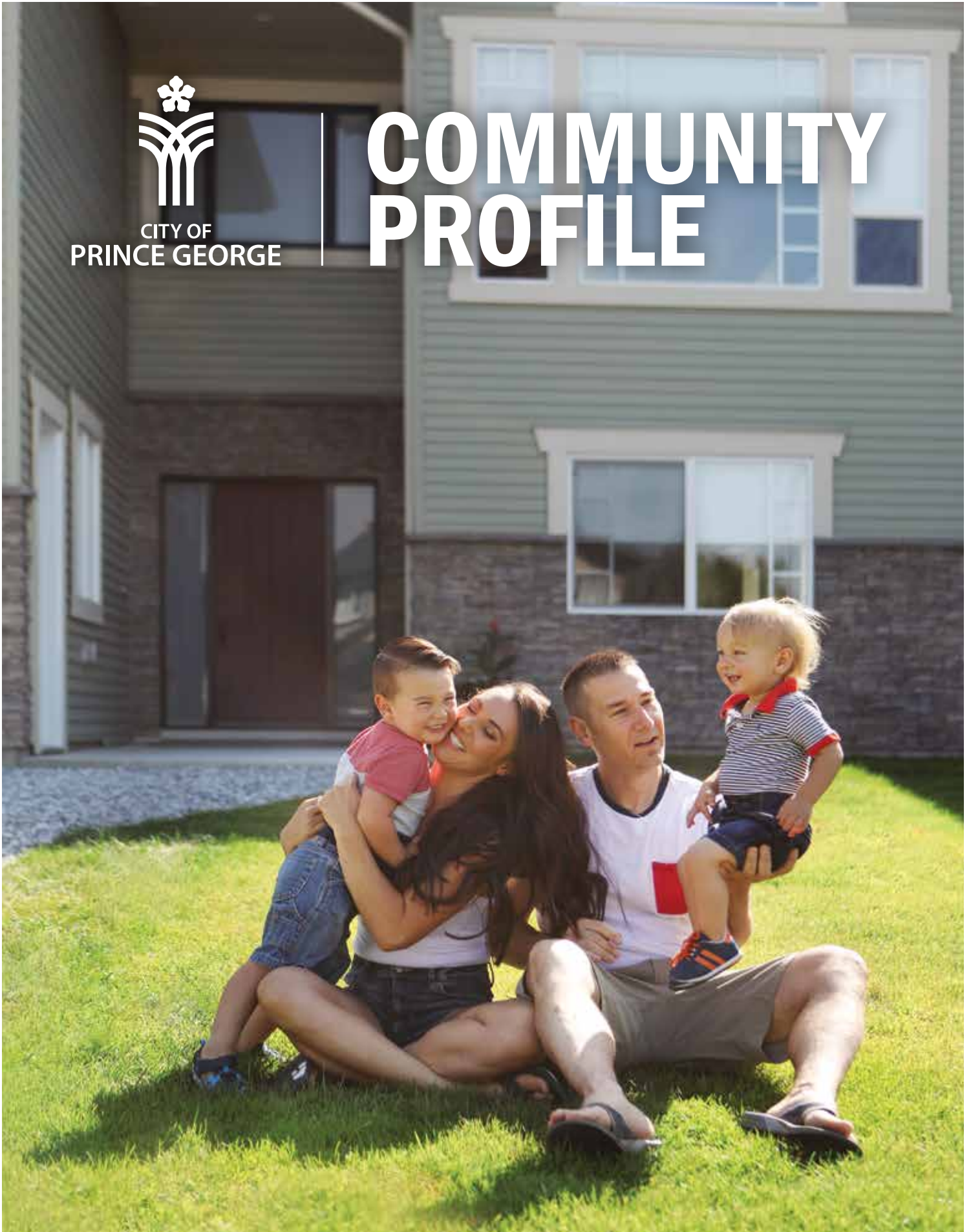




COMMUNITY PROFILE



MAYOR'S WELCOME



On behalf of City Council and the citizens of Prince George, it is my pleasure to welcome you to our great city.

Prince George is a hub community for Northern BC, located on the traditional territory of the Lheidli T'enneh, which means "people from where the rivers come together" in Dakelh language. This notion of being at a confluence is also the central feature of the

City of Prince George logo, which depicts the coming together of roads, rivers, and railways. In addition to this confluence of transportation corridors, the Prince George airport is a centralized air transportation hub for Northern British Columbia.

The transportation infrastructure connecting Prince George to the world makes it an ideal location for manufacturing, logistics and export operations. Combined with access to the rich natural resources in the region, manufacturing is a key sector which originated with forest products and has broadly diversified to include bio-energy, parts, machinery and equipment to name a few.

Prince George offers many opportunities in a number of priority industry groups:

- Forestry, Wood Products, and Bioproducts
- Transportation, Warehousing and E-commerce
- Manufacturing
- Professional Services: Engineering, Environmental Services, and Resource Management
- Construction: Commercial, Industrial, Residential, and General Contractors

The diversification and growth of the city is enabled by our two great post-secondary facilities: the College of New Caledonia (CNC) and the University of Northern British Columbia (UNBC). No city our size in Canada has the same range of educational programs and, in fact, UNBC, which is known as Canada's Green University, has been recognized by Maclean's magazine as one of the top five smaller universities for 13 straight years.

Prince George is very competitive when it comes to attracting new business and development. We offer low development cost charges, and are proud of our ability to provide top-notch customer service through our Planning Division while processing development permits quickly and efficiently. We have an innovative incentive program designed to encourage commercial and multi-family development downtown.

Small businesses represent 98 per cent of all businesses in British Columbia and employ 57 per cent of all private sector employees; we recognize that they are the backbone of our economy in Prince George, and strive to support them to grow and thrive through our business retention and expansion program, and by work closely with many local business support organizations.

In 2020, the City of Prince George had construction permits valued at \$220.6M, which almost matched last year's recording breaking level. 96 per cent came from the private sector which shows investor confidence in our economy. Multi-family housing construction was very strong in 2020 with 585 new units added to the City's housing supply over the past year.

It is an exciting time for Prince George. Great things are happening here, and I hope that you choose to become part of our wonderful city.

A blue ink signature of Mayor Lyn Hall.

Mayor Lyn Hall of Prince George

TABLE OF CONTENTS

1.0 INTRODUCTION

1.1 Location	4
1.2 Economic Overview	4

2.0 DEMOGRAPHICS

2.1 Population	5
2.2 Population by Age Characteristics	5
2.3 Language & Immigration	5

3.0 LABOUR FORCE

3.1 Industry Structure by Employment	6
3.2 Employment and Unemployment Rates	6

4.0 REAL ESTATE

4.1 Non-Residential Building Permit Values	7
4.2 Commercial and Industrial Development	7
4.3 Residential Market Trends	7

5.0 TRANSPORTATION

5.1 Road Transportation	9
5.2 Air Transportation	10
5.3 Rail Transportation	10
5.4 Marine Transportation	10

6.0 GOVERNMENT

6.1 Municipal Council	11
6.2 Regional District	11
6.3 Provincial Government	11
6.4 Federal Government	11

7.0 UTILITIES

7.1 Telecommunications	12
7.2 Waste Management & Recycling	12
7.3 Natural Gas	12
7.4 Electricity	12

8.0 BUSINESS CLIMATE

8.1 City of Prince George Tax Rates	13
8.2 Development Services	13
8.3 Development Cost Charges	13

9.0 QUALITY OF LIFE

9.1 Climate	14
9.2 Airshed Management	14
9.3 Communications & Media	14
9.4 City Living	15
9.5 Health & Safety	18
9.6 Education	19



1.0 INTRODUCTION

Welcome to Prince George, British Columbia. Located in central British Columbia (BC) on the traditional territory of the Lheidli T'enneh, the city of Prince George has a population of 74,003 and is the largest city in the region of nearly 320,000 people that it serves.

Development charges that are among the lowest in Canada, a healthy economy, excellent transportation connectivity and competitive tax rates make Prince George a preferred location for businesses to establish or expand their operations.

1.1 LOCATION

Prince George is situated in the heart of the province, 800 km north of Vancouver, British Columbia and 740 km west of Edmonton, Alberta. Located at the junction of major provincial Highways 16 & 97, Prince George is also located at the confluence of the Fraser and Nechako Rivers. Established on the traditional territory of the Lheidli T'enneh, Prince George is surrounded by vast natural beauty, yet offers full urban amenities and superior connectivity to global destinations.

1.2 ECONOMIC OVERVIEW

The Prince George economy is well-diversified across all sectors. Over recent decades, Prince George has developed from a mainly forest-based economy to a city that has a strong natural resource base, but also supplies goods and services for a broad range of sector activities throughout Northern BC, within Canada and internationally. Prince George is the largest city in the Cariboo development region. Its population of 74,003 makes up approximately 54% of the total Cariboo population.

The Cariboo development region's seven largest employment sectors are: Healthcare & Social Assistance; Wholesale & Retail Trade; Manufacturing; Construction; Accommodation & Food Services; Educational Services; and Forestry. Over the past decade, combined employment in these sectors has seen consistent growth, increasing the relative presence of the sectors and contributing to the economic strength and diversity of the region and city's economy.

Healthcare & Social Assistance

Over the past decade, employment in the Healthcare & Social Assistance sector has remained steady. Significant investments have been made to expand health services in the city over this time, including the BC Cancer Agency Centre for the North, and the accompanying Kordyban Lodge, which is the most recent investment in healthcare infrastructure in Prince George.

Wholesale & Retail Trade

13.6% of all employment in the Cariboo Development Region is in the Wholesale & Retail Trade sector, reflecting the establishment of new businesses and the continued growth of the Cariboo development region and Prince George as the service and supply centre for communities across central and Northern BC.

Manufacturing

Manufacturing remains one of the largest sectors in Prince George, with a broad range of production activities including wood and wood waste products, machinery & equipment, chemicals & plastics, and food & beverage manufacturing.

Construction

Construction remains one of the key employment sectors in Prince George and the Cariboo region, due both to capital investment in Prince George and local companies providing support to major projects throughout central and Northern BC.

Accommodation & Food Services

Accommodation and Food Services remained steady with the fishing, mining, quarrying, oil sector and is now in the top 5 sectors in Prince George. Prince George has seen many new restaurants over the past few years.

Educational Services

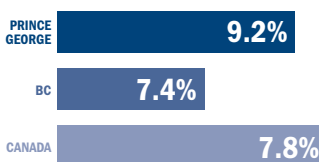
With two major post-secondary institutions, Prince George is a strong centre for both university, college, and trades related education. There are 5,400 people employed in this sector in the Cariboo region. Local school districts also contribute to the regional employment.

Forestry

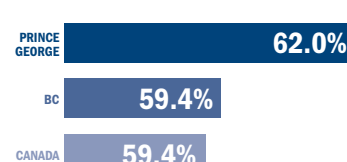
Prince George is the centre of a vibrant, sustainable, globally competitive forestry industry that provides enormous benefits to the local and regional economy. The forestry sector in Prince George consists of a complete supply chain network made up of a number of separate, but inter-connected activities.



45,500
ANNUAL
EMPLOYMENT



9.2%
UNEMPLOYMENT
RATE (2020)



62.0%
EMPLOYMENT
RATE (2020)

2.0 DEMOGRAPHICS

2.1 POPULATION

The census population of Prince George was 76,708 in 2021; the population of the Regional District of Fraser-Fort George was 94,506 in 2016.

AREA	POPULATION				
	2001	2006	2011	2016	2021
Prince George	72,406	70,981	71,974	74,003	76,708
Regional District of Fraser - Fort George	95,317	92,264	91,879	94,506	

SOURCE: BC Stats and Statistics Canada

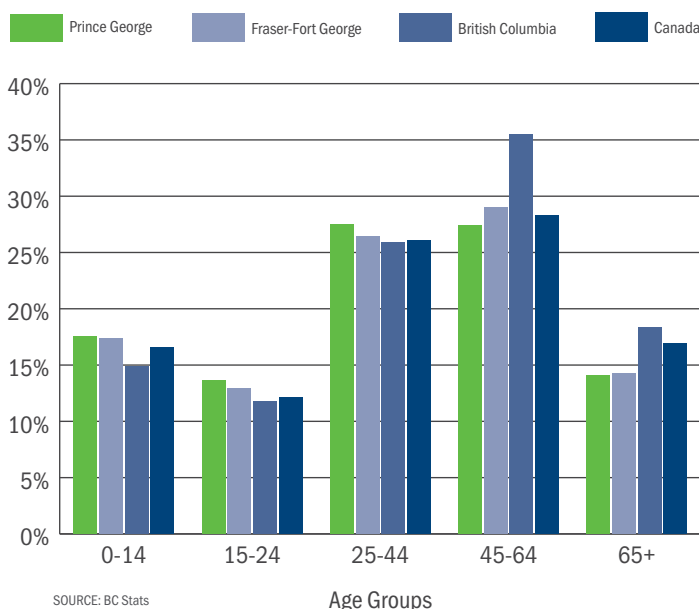
Northern BC's population was estimated to be 318,708 in 2016 and includes eight Regional Districts:

REGIONAL DISTRICT	POPULATION (2016)
Fraser-Fort George	94,506
Bulkley-Nechako	37,896
Cariboo	61,988
Kitimat-Stikine	37,367
Northern Rockies	5,393
Peace River	62,942
Stikine	740
Skeena-Queen Charlotte	18,133
TOTAL	318,965

SOURCE: Statistics Canada

2.2 POPULATION BY AGE CHARACTERISTICS

The Regional District of Fraser-Fort George and Prince George have a relatively young population in comparison to BC as a whole, with 38.6% of the population aged 24 or younger in the Regional District and 35.9% in Prince George. Given the trend of the aging population in North America, Prince George is well positioned to provide a relatively productive workforce in the coming years.



2.3 LANGUAGE & IMMIGRATION

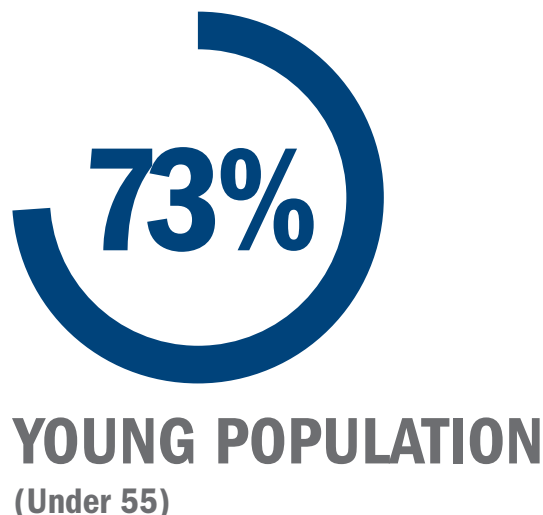
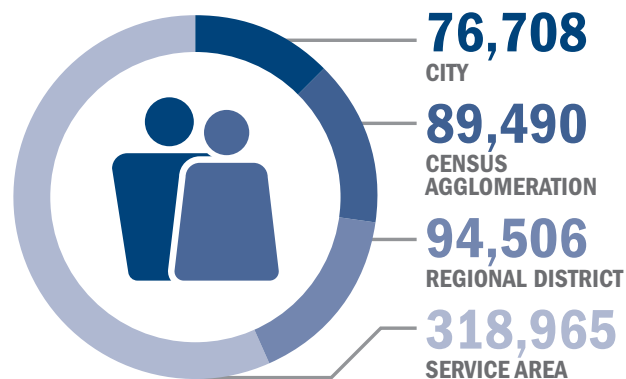
Prince George's diverse population includes a large Francophone community and a number of established and growing immigrant communities.

COUNTRY OF ORIGIN	NUMBER OF PEOPLE
India	1,105
United Kingdom	1,000
Philippines	715
United States	705
Germany	425
China	360

SOURCE: Statistics Canada

MOTHER TONGUE	NUMBER OF PEOPLE
English	71,830
Punjabi (Panjabi)	1,395
French	940
German	915
Cantonese and Mandarin	630
Tagalog (Pilipino, Filipino)	525

SOURCE: Statistics Canada



3.0 LABOUR FORCE

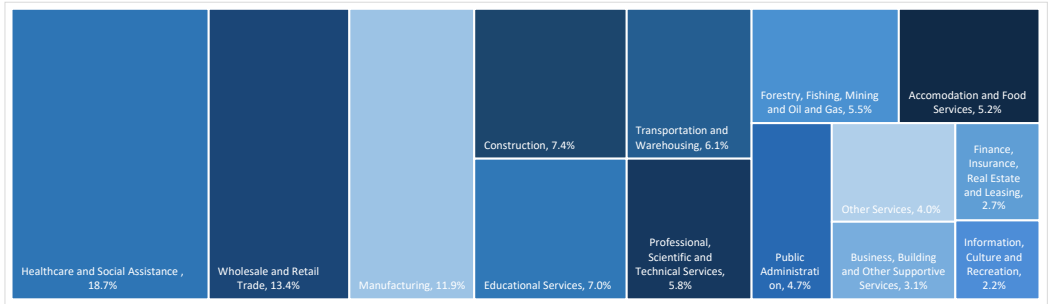
3.1 INDUSTRY STRUCTURE BY EMPLOYMENT

In the Cariboo development region, service-producing industries provide the majority of employment, employing 73% of the workforce. Goods-producing industries employ the remaining 27% of the workforce.

3.2 EMPLOYMENT AND UNEMPLOYMENT RATES

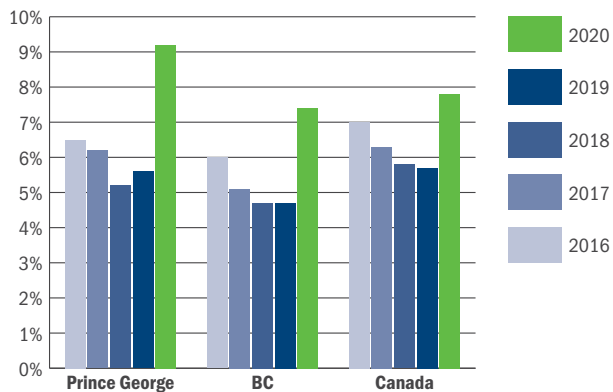
Prince George consistently maintains a higher employment rate than the province of BC and Canada as a whole. High employment rates and low unemployment in recent years indicate the strength of the local economy and reflect resilience throughout economic cycles.

EMPLOYMENT BY INDUSTRY (2018)



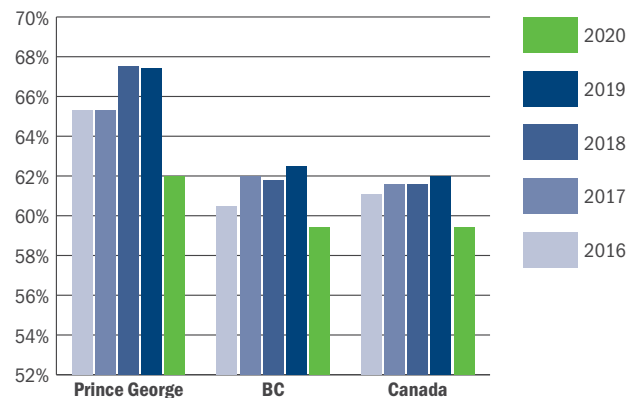
SOURCE: Statistics Canada

UNEMPLOYMENT RATE (%)



SOURCE: Statistics Canada

EMPLOYMENT RATE (%)



SOURCE: Statistics Canada



4.0 REAL ESTATE

4.1 NON-RESIDENTIAL BUILDING PERMIT VALUES (\$000)

Building activity has been strong over the last few years in Prince George, with non-residential permits making up the majority of construction permits issued.

YEAR	TOTAL PERMIT VALUE	NON-RESIDENTIAL	%NON-RESIDENTIAL
2020	\$220,901,869	\$83,037,163	37.6%
2019	\$223,237,650	\$77,901,448	34.9%
2018	\$186,385,000	\$72,010,804	38.6%
2017	\$116,813,000	\$40,376,000	34.6%
2016	\$127,900,000	\$55,340,000	43.3%
2015	\$88,216,000	\$33,652,000	38.1%
2014	\$125,612,000	\$76,770,000	61.1%
2013	\$102,429,000	\$64,951,000	63.4%

SOURCE: BC Stats

4.2 COMMERCIAL AND INDUSTRIAL DEVELOPMENT

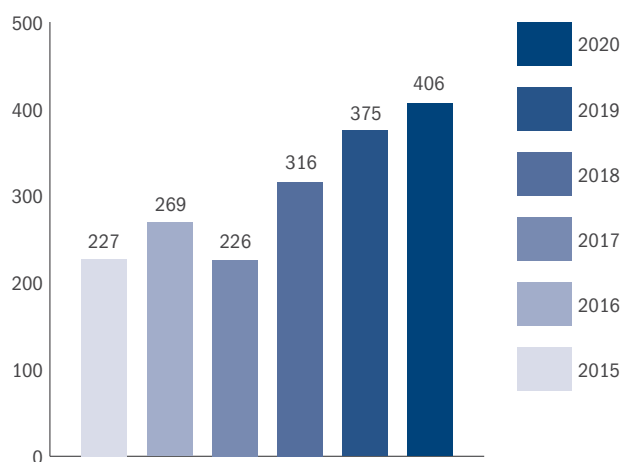
Prince George offers a number of development opportunities with a good selection of affordable land and properties in various areas of the city suitable for commercial, residential, and industrial projects.

Official Community Plans (OCPs) for the Regional District of Fraser-Fort George (www.rdffg.bc.ca) and the City of Prince George (www.princegeorge.ca) outline land use policy (present and future). Proposed development must be consistent with the OCPs and local development guidelines. For more information on commercial and industrial development refer to the Prince George Business Investment Guide at www.investprincegeorge.ca.

4.3 RESIDENTIAL MARKET TRENDS

Stable growth in demand for new single and multi-family housing units has kept annual housing starts steady in recent years. Given projected population and economic growth, the housing market is expected to remain strong. Housing prices have been rising steadily in the city; since 2016, housing prices have increased by 35.2%, which is an indicator of the attractiveness of the community and the confidence in the local economy. However, Prince George is still one of the most affordable cities in Canada, both for home ownership and rental accommodation.

HOUSING STARTS IN PRINCE GEORGE

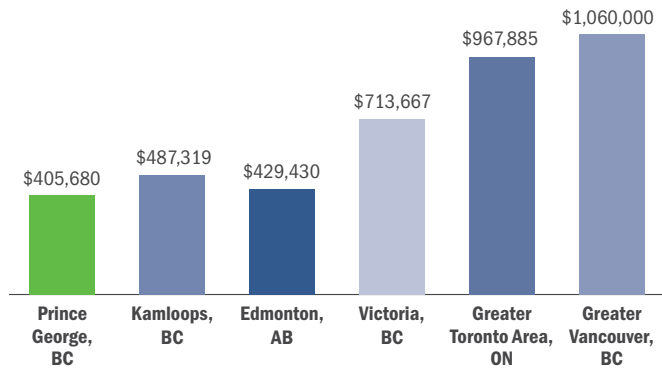


SOURCE: Canada Mortgage and Housing Corporation



2021 COMMUNITY PROFILE

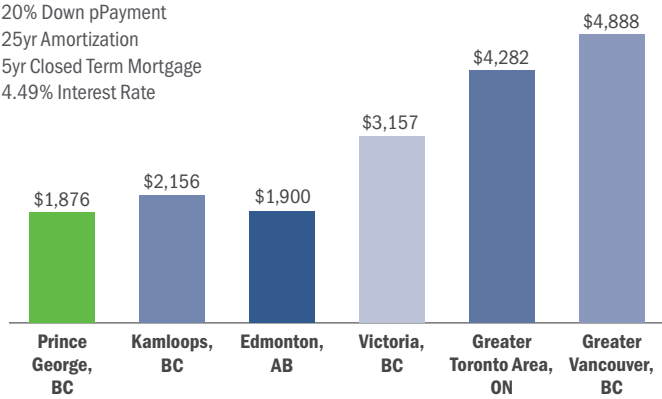
MLS® AVERAGE HOME SALE PRICE



SOURCE: BC Northern Real Estate Board, The Canadian Real Estate Association, Kamloops & District Real Estate Association

AVERAGE MORTGAGE PAYMENTS ACROSS CANADA

20% Down pPayment
25yr Amortization
5yr Closed Term Mortgage
4.49% Interest Rate



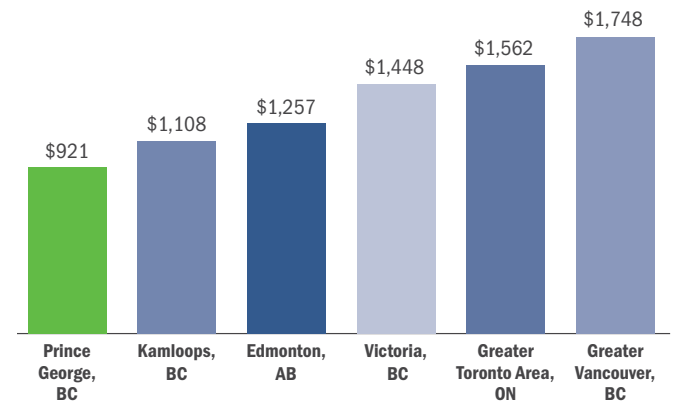
SOURCE: Scotiabank, BC Northern Real Estate Board, The Canadian Real Estate Association, Kamloops & District Real Estate Association

The percentage of household income required to finance home ownership in Prince George is considerably lower than in other areas of the province (30.6% in Prince George compared to 103.3% in Vancouver).

YEAR	HOUSING AFFORDABILITY INDEX		
	PRINCE GEORGE	NORTHERN BC	VANCOUVER
2020	30.6%	26.1%	103.3%
2019	30.9%	26.9%	115.5%
2018	30.9%	26.9%	118.9%
2017	30.9%	28.9%	115.7%
2016	27.2%	26.8%	125.4%

SOURCE: BC Northern Real Estate Board

AVERAGE RENT IN DIFFERENT CITIES (\$/MONTH, 2 BEDROOMS)



SOURCE: Canada Mortgage and Housing Corporation



5.0 TRANSPORTATION

Prince George offers superior transportation connectivity for local businesses and residents via road, air, rail, and marine infrastructure. This transportation network gives Prince George businesses and residents easy access to anywhere in the world.

5.1 ROAD TRANSPORTATION

Prince George is located at the junction of the north-south Highway 97 and east-west Highway 16. The provincial and federal governments have made considerable investments into road infrastructure in Northern BC, including widening the 440-km portion of Highway 97 between Cache Creek and Prince George to four lanes, widening a portion of Highway 97 near Prince George to four lanes and improving highway accesses, and making improvements to the Pine Pass. The competitive advantages of Prince George's transportation infrastructure are enhanced by the wide variety of transportation service providers located in the city.

DISTANCE TO CITIES IN THE TRANSPORTATION NETWORK BY HIGHWAY FROM PRINCE GEORGE	KILOMETRES	MILES
Vancouver, BC	786	488
Calgary, Alberta	793	493
Edmonton, Alberta	742	461
Prince Rupert, BC	722	449
Fort St. John, BC	458	285



5.2 AIR TRANSPORTATION

The Prince George International Airport (YXS) has the fourth longest runway in Canada (11,450 ft) and provides domestic and international air service for passengers and cargo. Air Canada, Central Mountain Air, Pacific Coastal and WestJet operate out of YXS with multiple flights every day to Vancouver, Edmonton, Calgary, Victoria, Kelowna, Kamloops, Smithers, Terrace/Kitimat, Dawson Creek, Fort Nelson and Fort St. John. Direct access to major hubs gives Prince George residents access to the world. Northern Thunderbird Air connects the north and BC's interior through chartered flights. The Prince George International Airport also handles international travel with scheduled seasonal flights to Mexico. 176,994 passengers passed through the airport in 2020 www.pgairport.ca.

YXS is the Transpacific Logistics Alternative, located on the Great Circle Route between major Asian and North American markets. Visit www.pgairportlogistics.ca for more information.

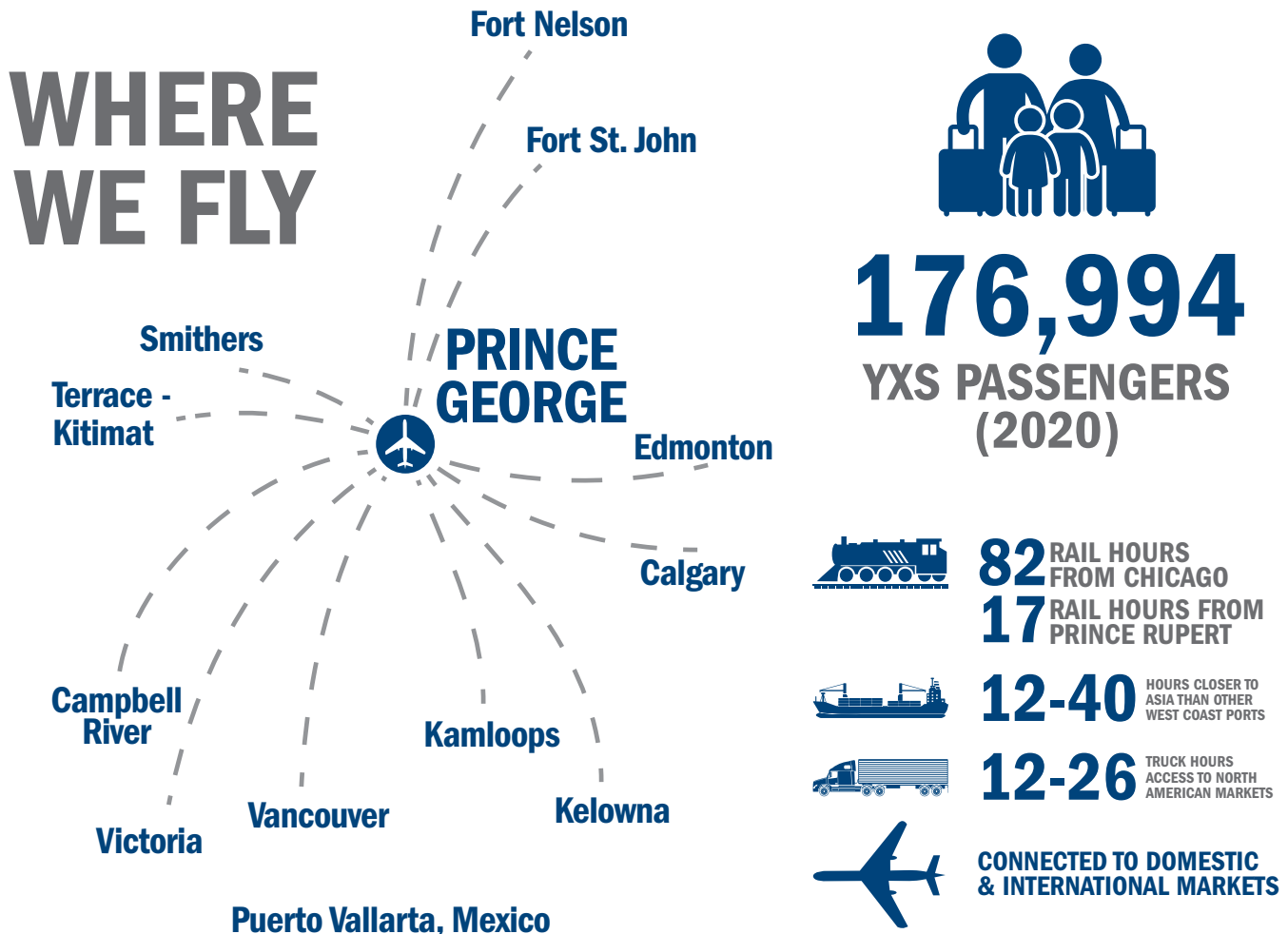
5.3 RAIL TRANSPORTATION

Prince George is the divisional headquarters and regional operations hub for CN Rail's activities in Northern BC. With its transcontinental rail network, CN offers the shortest and fastest routes connecting domestic and international markets. This gives Prince George a strategic position to facilitate the export of containerized products to Asia via the Port of Prince Rupert. CN's Prince George intermodal facility recently expanded to meet increased export demand.

VIA Rail serves a growing visitor market, providing passenger service from Prince Rupert to Jasper via Prince George.

5.4 MARINE TRANSPORTATION

Prince George is strategically located along the Northwest Transportation corridor, with road and rail access to the Port of Vancouver and the Port of Prince Rupert (the closest Northern American port to Asia) for trade directed east. Lack of urban congestion and plenty of rail capacity along the northern mainline facilitates the high-speed movement of goods between Prince Rupert and all points east. The Ports activity is expected to grow over 50 million tones of trade annually within the next decade.



6.0 GOVERNMENT

6.1 MUNICIPAL COUNCIL

Prince George City Council has prioritized four key initiatives which include Social Development, Environment, Economic Development and City Government. With a focus on these initiatives, Council hopes to, among other things, address homelessness, improve air quality, grow affordable and accessible housing, diversify and grow the economy, and improve employee engagement.

Council's Vision: To be a high functioning, focused, effective, efficient, responsive, productive, and accountable Council.

Council's Mission: To provide high quality services and good governance for the City of Prince George within available resources.

TITLE	NAME
Mayor	Lyn Hall
Councillors	Frank Everitt
	Garth Frizzell
	Kyle Sampson
	Murry Krause
	Terri McConnachie
	Cori Ramsay
	Susan Scott
	Brian Skakun

6.2 REGIONAL DISTRICT

The Regional District of Fraser-Fort George's number of Elected Officials is 14.

DIRECTORS (RDFFG)	MUNICIPALITY/ELECTORAL AREA
Warren Wilson	"A" Salmon River - Lakes
Lara Beckett	"C" Chilako River - Nechako
Bill Empey	"D" Tabor Lake - Stone Creek
Art Kaehn	"E" Hixon - Woodpecker
Kevin Dunphy	"F" Willow River - Upper Fraser
Pat Crook	"G" Crooked River - Parsnip
Danielle Alan	"H" Robson Valley - Canoe
Mayor Lyn Hall	City of Prince George
Murry Krause	City of Prince George
Kyle Sampson	City of Prince George
Terri McConnachie	City of Prince George
Joan Atkinson	District of Mackenzie
Allan Frederick	Village of McBride
Mayor Owen Torgerson	Village of Valemount

6.3 PROVINCIAL GOVERNMENT

PREMIER	
Name	John Horgan
Party Affiliation	New Democratic Party
Elected	July 18, 2017
MEMBERS OF THE LEGISLATIVE ASSEMBLY	
Electoral District	Prince George - Mackenzie
MLA	Mike Morris
Party Affiliation	Liberal
Electoral District	Prince George - Valemount
MLA	Shirley Bond
Party Affiliation	Liberal

6.4 FEDERAL GOVERNMENT

PRIME MINISTER	
Name	Justin Trudeau
Party Affiliation	Liberal
Elected	November 4, 2015
MINISTERS OF PARLIAMENT	
Riding Name	Cariboo - Prince George
Ministers of Parliament	Todd Doherty
Party Affiliation	Conservative
Riding Name	Prince George - Peace River
Ministers of Parliament	Bob Zimmer
Party Affiliation	Conservative



7.0 UTILITIES

7.1 TELECOMMUNICATIONS

Prince George’s high quality, reliable telecommunications infrastructure ensures that residents and businesses are well-connected. Wireless and fixed-line telephone and broadband services are available through several providers.

7.2 WASTE MANAGEMENT & RECYCLING

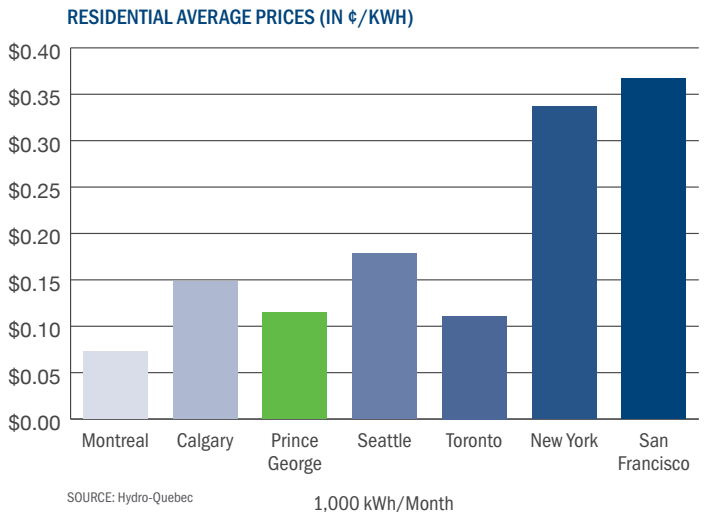
The Province of British Columbia has introduced the new Multi-Material BC (MMBC) recycling program to provide curbside recycling collection of packaging and printed paper for residents who currently receive curbside garbage collection (www.multimaterialbc.ca). Additional recycling depots and the regional landfill are managed by the Regional District of Fraser-Fort George. Business waste management infrastructure and policies vary depending on the characteristics of the operation. The City of Prince George (www.princegeorge.ca) or the Regional District Fraser-Fort George (www.rdffg.bc.ca) can be contacted for more information.

7.3 NATURAL GAS

Fortis BC (www.fortisbc.com) delivers natural gas to homes and businesses in Prince George. For more information, refer to the rate schedule that applies to the Inland region for residential buildings. These rates are updated quarterly and available through the “For Homes” section of the Fortis BC website.

7.4 ELECTRICITY

BC Hydro (www.bchydro.com) supplies electricity for residents and businesses in Prince George. BC’s electricity rates are amongst the lowest in North America. Electricity rates depend on three factors: demand, supplied voltage and customer load.

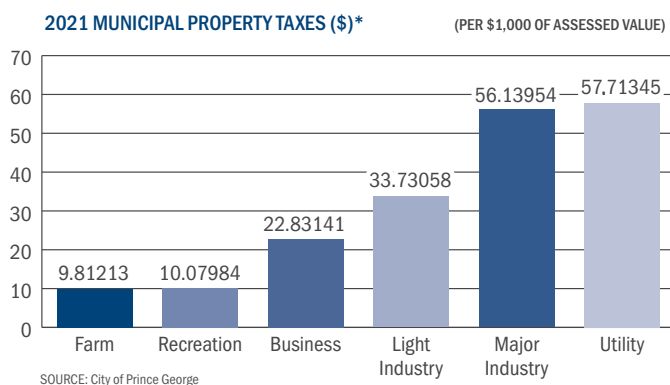
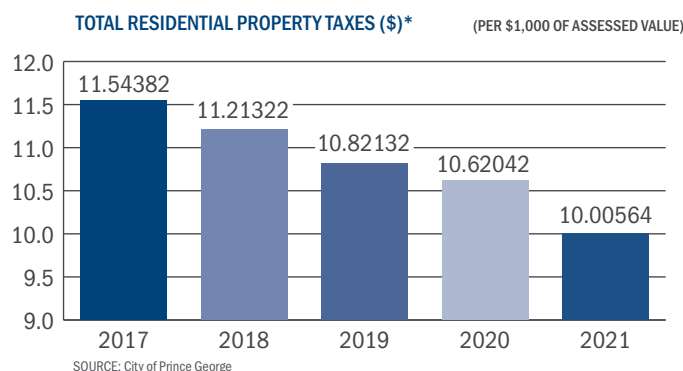


8.0 BUSINESS CLIMATE

8.1 CITY OF PRINCE GEORGE TAX RATES

The City of Prince George offers residential property taxes and comparatively lower housing prices that have provided a lower tax burden and stable housing environment over the last five years.

The City of Prince George also has property taxes that are competitive with other municipalities in BC, making the city a great place for finding a high quality of life and business opportunities.



8.2 DEVELOPMENT SERVICES

The City's Official Community Plan (OCP) establishes the framework for directing future growth and land use in the City of Prince George. The OCP provides for long-term land use in terms of residential, commercial and industrial development, as well as parks and recreation, green space and agricultural land. A complete copy of the OCP is available on the City's website: www.princegeorge.ca. A number of development review processes are required by the City, including: Development Permits, Building Permits, Development Variance Permits, Business Licenses and Land Use Changes, such as rezoning. Any proposed land use or development must be consistent with its OCP designation and meet zoning, other city bylaw and safety requirements. For more detailed information contact the City of Prince George Development Services Department (www.princegeorge.ca).

In order to ensure that the City's municipal land use regulation, building and fire codes, and other community safety requirements are followed, businesses operating in the City of Prince George need a valid business license. The cost of a license depends on the type of business, and licenses must be renewed annually. A complete listing of Business License Fees is available on the City's website (www.princegeorge.ca).

8.3 DEVELOPMENT COST CHARGES (DCCS)

There are four area-specific DCC rates (A, B, C, and D), with rates reflecting a truer cost of servicing development in the outer lying areas of the city. Lower DCC rates are applied for certain development conditions in order to encourage sustainable growth. DCC rates are area specific to reflect a truer cost of service development. Specific inquiries should be made to the City of Prince George Development Services Department. (www.princegeorge.ca)

TYPE OF DEVELOPMENT	AREA A* (INCLUDES THE BCR, DANSON AND CARTER INDUSTRIAL AREAS)	AREA B*	AREA C* (INCLUDES THE PRINCE GEORGE AIRPORT AUTHORITY)	AREA D* (INCLUDES THE DOWNTOWN CENTRAL BUSINESS DISTRICT)
Single-Family/Two-Family Residential (per parcel)	\$3,529	\$6,578	(See Note 1)	(See Note 1)
Higher Density Single/Two-Family Residential (per parcel)	\$2,899	\$5,370	(See Note 1)	(See Note 1)
Multi-Family Medium to High Density (per unit)	\$2,295	\$4,283	\$2,295	\$229
Commercial (per m2)	\$32.28	\$61.08	\$35.33	\$2.85
Industrial (per ha)	\$53,250	\$98,483	\$51,448	\$5,282
Institutional (per m2)	\$24.31	\$46.11	\$26.72	\$2.10

Note 1: If a development deemed to be single-family/two-family residential proceeds in Areas C or D, rate calculated for the corresponding land use in Area A will apply.

SOURCE: City of Prince George

* Rates current at time of publication

9.0 QUALITY OF LIFE

AVERAGE*	JAN	FEB	MAR	APR	MAY	JUN	JUL	AUG	SEPT	OCT	NOV	DEC
Temperature (°C)	-8	-3.9	-0.9	6.1	11	14.4	16.5	16	11.3	5.7	-1.6	-6.5
Rainfall (mm)	10	9	16	28	45	63	56	49	50	51	22	9
Snowfall (cm)	44	23	16	2	0	0	0	0	0	4	22	43

SOURCE: The Weather Network

*30 year average

9.1 CLIMATE

Prince George has a moderate climate due to its central location in BC. With just over 1,900 hours of sunshine per year, residents of the city experience all four seasons and enjoy the outdoors all year round. The average summer temperature (June to August) is 15.6°C with an average high of 22.1°C, and the average winter temperature (December to February) is a moderate -6.1°C with an average high of -2.2°C.

9.2 AIRSHED MANAGEMENT

Prince George is committed to ensuring good air quality for residents. The Prince George Air Improvement Roundtable (PGAIR) researches, monitors and implements air quality improvements in order to reduce the emission of air contaminants that cause air quality concerns, and prevent air quality problems from developing. The roundtable requires the cooperation of all levels of government, industry, community stakeholders and the general public (www.pgairquality.com).

9.3 COMMUNICATIONS & MEDIA

9.3.1 LOCAL RADIO & TV STATIONS

Prince George has seven local radio stations which offer a variety of different genres of music and talk programming for their listeners. Prince George's local TV station (CKPG Today) provides residents with popular programs and up-to-date news airing at numerous times throughout the day.

9.3.2 NEWSPAPERS

The Prince George Citizen is Prince George's weekly newspaper. They provide print and online issues.

9.3.3 NEWS WEBSITES

Prince George has two online news sources called Prince George Now and The Prince George Daily News.



9.4 CITY LIVING

In Prince George, a full range of urban amenities complement four-season recreation found in the natural beauty of the outdoors. Prince George is a growing city that offers an abundant selection of activities for residents and visitors alike. Recreation, dining, culture, and entertainment opportunities abound, facilitating community involvement and contributing to the quality of life in the city.

9.4.1 RECREATION & SPORT

Prince George is a mecca for outdoor enthusiasts, with 120 parks within city limits, campsites, golf courses, and many other outdoor facilities. A ten-minute drive in any direction brings residents and visitors in contact with numerous hiking and biking trails, fishing spots, and swimming holes. In fact, there are over 1,600 lakes and rivers within an hour's drive of Prince George; the city is perfect for a weekend getaway!

Prince George's world class sport facilities provide a wide range of sporting activities, with 18 outdoor and six indoor soccer fields, over 30 tennis courts, seven indoor ice rinks, two aquatic facilities (one deemed world class), gyms (one with the largest indoor running track in BC), curling rinks, and numerous other sporting facilities. A truly four-season recreation city, Prince George boasts spectacular cross country skiing trails, a world class biathlon range, challenging downhill skiing and snowboarding, and a 400 metre outdoor ice oval. In fact, the city is the home of The Prince George Iceman, the only winter multisport event of its kind. Prince Georgians definitely don't hibernate in winter!

Further proof of the city's winter sports know-how was made clear when Prince George was chosen to host the 2015 Canada Winter Games. From February 13 to March 1, 2015 the city hosted 2,400 athletes, 1,000 coaches and officials, up to 4,500 volunteers, hundreds of media, and thousands of visitors. The city has since been chosen to host other high-level sporting events, including the 2019 World Para Nordic Skiing Championships and the 2022 BC Summer Games.

9.4.2 DINING OUT IN PRINCE GEORGE

Prince George is home to a top-notch food community with highly awarded restaurants and diverse festivals. As the major service centre for northern BC, Prince George has the fast food and formal dining chain restaurants that one would expect in a larger city. Meanwhile, the downtown core offers a wide array of local options. There's plenty to choose from whether you crave upscale French cuisine, romantic Mediterranean, locally brewed craft beer and farm fresh foods, barbeque platters and brisket, mild or spicy curries, authentic Thai food, authentic Italian style pizza, or fine dining delicacies.

Throughout the year, the people of Prince George are treated to numerous food and drink festivals, including the Theatre Northwest International Wine Festival and Scotch and Social, Kiwanis Ale Festival, Summerfest and Winterfest Taste Pavilions, Foodie Fridays, Taste of India, and Vaisakhi Sikh Parade.



9.4.3 CULTURE & ENTERTAINMENT

Prince George has a thriving arts scene, and those searching for a cultural experience won't be disappointed. The city has two professional theatre companies (Theatre Northwest and Judy Russell Productions), a first-class symphony (Prince George Symphony Orchestra), incredible art museums (the Two Rivers Gallery and the Omineca Arts Centre), and many innovative dance companies. The Exploration Place Museum and Science Centre is always a delight with its informative and entertaining exhibits and the Railway and Forestry Museum offers an educational step back in time and is even dog friendly. Not to mention Huble Homestead, only 40 km from downtown, which offers visitors the opportunity to immerse themselves in the history of the early 1900s.

Prince George also enjoys a growing music scene. Since 2008, the annual Coldsnap Music Festival has been warming up both residents and visitors every winter as one of Canada's premiere winter music festivals. The Casse-Tête Festival, a three-day showcase of experimental music, is going strong after its inaugural year in 2013. Many local pubs and restaurants host touring and local musicians as well as open-mic nights, so live music is never hard to find in Prince George.

An active arts community made up of writers, artisans, and craftspeople of all kinds enhances life in Prince George by facilitating a broad range of unique artistic experiences. Many downtown boutique shops feature locally made artwork, handcrafts, and traditional Aboriginal art. The city's series of fall arts fairs are considered "must attend" events. Shopping opportunities in Prince George abound with many national and international retailers and two large shopping malls featuring popular brands and a vibrant downtown core with unique, locally owned shops lining the streets.

Sports fans will have a great time taking in the local talent. The University of Northern British Columbia's Northern Sports Centre is home to the Canadian Interuniversity Sport (CIS) division men and women's Timberwolves soccer and basketball teams. The Rolling Mix Concrete Arena, located downtown, is the host arena of the city's Junior "A" Hockey Club, the Prince George Spruce Kings; meanwhile, the CN Centre is home to the Western Hockey League's Prince George Cougars and is also a venue for big name performers of every variety, including Elton John and Cirque du Soleil.



9.4.4 MEETINGS AND CONVENTIONS

Prince George is the natural meeting place for rivers, highways, and – most importantly – people! The city offers exceptional value with all the comforts and amenities necessary to host an unforgettable event. As the hub for Northern BC, Prince George is host to many industry, corporate, association and community meetings and conventions. The Prince George Conference and Civic Centre is the city's premiere meeting and conference venue; with over 60,000 sqft of flexible space and a reputation for exceptional service, the venue hosts an average of 500 events each year with over 150,000 individual attendees. Those looking for something out of the ordinary will find many other venue options in Prince George: The CN Centre's Ice Lounge, the Bentley Centre at the University of Northern British Columbia, and the brand new Northern Lights Estates Winery are just a few examples of unique spaces.

With more than 900 hotel rooms right in the downtown core along with an additional 75,794 sqft of meeting space there is something for everyone. An additional 1,507 hotel and motel rooms are just within city limits. The Sales Manager, Meetings and Conventions at Tourism Prince George and the many event planners and service providers in Prince George are available to provide assistance every step of the way to ensure successful events that are sure to leave a lasting impression.

9.4.5 VISITOR SERVICES

The Prince George Visitor Information Centre is located at 101-1300 First Avenue along Highway 16 and close to the downtown. The Centre is a welcoming place, providing free wireless Internet access, a guest lounge area, free computer use, restroom facilities, a gift shop, and displays from various local artists. You can even borrow bicycles and fishing rods at no charge. Visitor Centre staff will be delighted to help you find anything you need to know about Prince George. (www.tourismpg.com)

9.4.6 DOWNTOWN PRINCE GEORGE

Downtown Prince George is a hub for a variety of professional service organizations including banks, law firms, insurance companies, engineering firms, accounting services and more. The downtown core is also home to numerous locally owned boutiques, restaurants and pubs. Locals who live downtown enjoy the ease of walking to work and the convenience of public transportation.

Featuring several development incentives and some of the lowest development cost charges in the city, the downtown core is an ideal location for both commercial and residential development. To connect with the Downtown Business Improvement Association, please visit their website. (www.downtownpg.com)



9.5 HEALTH & SAFETY

9.5.1 NORTHERN HEALTH

The head office for Northern Health (NH), which is responsible for the delivery of healthcare across Northern BC, is located in Prince George. Within NH, there are over two dozen hospitals, 14 long-term-care facilities, and many public health units and offices providing specialized services. Prince George is also home to the region's largest and only teaching hospital, the University Hospital of Northern British Columbia (UHNBC). NH's operating budget for the 2018/2019 fiscal year was \$87M. More than 8,200 people work for NH, holding approximately 3,800 full-time equivalent positions. (www.northernhealth.ca)

The BC Cancer Agency Centre for the North and its supporting facility, The Kordyban Lodge, became operational in November 2012 and March 2013 respectively, representing an estimated \$100M+ investment in healthcare infrastructure in Prince George. This new facility brings cancer services closer to home for residents living across Northern BC, so that patients and their families do not have to travel as far to access specialized cancer care. The Kordyban Lodge offers a comfortable and welcoming "home away from home" for out-of-town patients receiving care at the BC Cancer Agency Centre for the North, and their caregivers.

9.5.2 RCMP POLICE SERVICES

The Royal Canadian Mounted Police are contracted to be the municipal police force and serve the community of Prince George and the Regional District of Fraser-Fort George. During the spring of 2014, a new \$38.9M RCMP Detachment facility opened in downtown Prince George. The North District Main RCMP Detachment is located at 5th and Ospika.

9.5.3 FIRE PROTECTION AND AMBULANCE SERVICES

The Prince George Fire Department has four fire halls strategically located throughout the city to provide optimum coverage for the community. The Fire Department has formed and trained special rescue teams to handle highly technical and large-scale rescues and emergencies.

The BC Ambulance Service (BCAS) Northern Region Administrative Office is located in Prince George and serves 34 ambulance stations across the Northern region. BCAS flight centres support the AIRVAC and Critical Care Transport Program, which provides necessary transportation linkages between hospitals and referral centres across the province.



9.6 EDUCATION

9.6.1 UNIVERSITY OF NORTHERN BRITISH COLUMBIA

The University of Northern British Columbia (UNBC) was ranked #1 among small universities in Canada in 2015 and 2016 and has been one of the top three universities of its size for 12 straight years. UNBC is a leader in research and has received more than \$199M in research awards since its establishment. UNBC is internationally recognized and, along with Harvard, was ranked #1 for sustainability projects in North America in 2010 for the campus bioenergy plant and its ability to connect teaching and research.

UNBC offers more than 100 academic programs leading to certificates, diplomas, and degrees, including Masters and PhDs. Included in the university's diverse program offerings is the Northern Medical Program, a partnership with the University of British Columbia (UBC). In the 2020/2021 academic year, 4,253 students were enrolled at the university. (www.unbc.ca)

9.6.2 COLLEGE OF NEW CALEDONIA

The College of New Caledonia (CNC) is committed to providing educational opportunities designed to meet the unique needs of the residents of Central and Northern BC. In 2018 around 8,600 students were enrolled at the college, including international programs. The College offers more than 70 programs at six campuses including health sciences, trades, university studies and career access. CNC recently built a new \$19.7M Technical Education Centre to provide a range of trades training opportunities to its students. CNC offers one of the lowest tuition rates in BC and has provided education to over 100,000 students since its inception in 1969. (www.cnc.bc.ca)

9.6.3 SCHOOL DISTRICT NO. 57

School District No. 57, covering the boundaries of the Regional District of Fraser-Fort George, currently enrolls 12,894 students and employs more than 1,800 teachers and support staff. The District consists of thirty two elementary schools, eight secondary schools, and one Centre for Learning Alternatives. The Board of Education and senior administration are accountable to the families and communities they serve and manage an annual budget of approximately \$181.5M (2019/2020). (www.sd57.bc.ca)

9.6.4 SCHOOL DISTRICT NO. 93

The Conseil Scolaire Francophone (CSF) is the only school authority in British Columbia to offer the complete Francophone Education Program. The francophone program in Prince George enrolls 1,135 students from kindergarten to grade 12; kindergarten to grade 7 students attend Ecole Elementaire Franco-Nord and grades 8 to 12 are completed at Duchess Park. (www.csf.bc.ca)

Over 4k UNBC STUDENTS
Over 8k CNC STUDENTS





CITY OF
PRINCE GEORGE

City of Prince George - Economic Development

1100 Patricia Blvd. | Prince George, British Columbia, Canada V2L 3V9

Tel. 250.561.7633

www.investprincegeorge.ca

Disclaimer: The data provided in this document has been collected from a variety of sources and is deemed to be accurate and up-to-date at the time of publication. Please report errors or omissions to City of Prince George - Economic Development. City of Prince George - Economic Development does not accept responsibility or liability for information and those using the material should verify it with other sources to ensure that it is correct and current.